



25

APARTMENTS & LOFTS
UNDER 1000 SQUARE FEET



JAMES GRAYSON TRULOVE

CONTENTS

FOREWORD	6
DOMESTIC RIBBON	12
LUCENTINI RESIDENCE	22
HONG KONG APARTMENT	28
ABOVE/BETWEEN LOFT	34
KIMONO CABINET	40
GALLERY APARTMENT	46
BROOKLYN APARTMENT	54
PLAYERS PAD	60
CHELSEA APARTMENT	68
ARRIGHI APARTMENT	76
MALINA LOFT	86
ROOFTOP APARTMENT	94
21ST STREET APARTMENT	100
PENTHOUSE OASIS	108
EMPTY NESTER APARTMENT	114
12TH STREET APARTMENT	122
FLEXIBLE SPACE	128
DORSINVILLE LOFT	134
STOREFRONT LOFT	142
TWO FOR ONE APARTMENT	152
PERIOD APARTMENT	158
WESTSIDE APARTMENT	164
DAYDREAMS	172
TRIBECA LOFT	180
CLEAN LINES	186

LUCENTINI RESIDENCE

750
SQUARE FEET

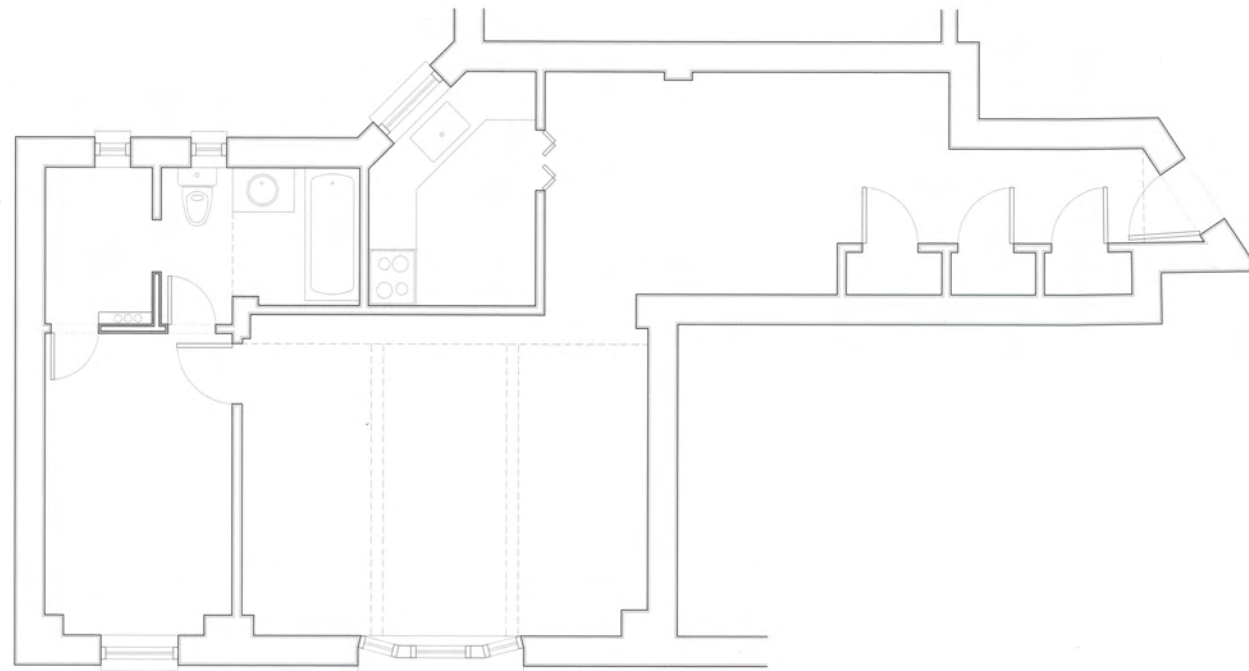
ARCHITECT AB ARCHITECKTEN • PHOTOGRAPHER ARCHPHOTO

When creating a design for the remodeling of this Manhattan apartment, the architect utilized two built-in wooden elements to organize and reorient the space. The first element is a continuous three-dimensional walnut band that defines the perimeters of the relocated kitchen. The second element is a floating walnut plane that serves to define the transition between the living room and bedroom.

On an organizational level, several changes were made to the existing floor plan to optimize the use of space and to take advantage of the apartment's two exposures. First, the kitchen was moved into the previously oversized and underutilized hallway, freeing up space to create a large open living/dining area with windows providing north and south views of the city. Next, the bedroom was enlarged by extending it into the living area where a maple bookshelf separates the two rooms. The walnut plane above the bookshelf reconciles the offset in section created by this enlargement, preserving the symmetry of the ceiling structure as it relates to the living room window. When the sliding doors on either side of the bookshelf are retracted, the bookshelf becomes a functional island in a continuous living/sleeping area. In the bathroom the tub was relocated so that an additional door could be added to allow convenient access for guests to the bathroom without having to enter the bedroom.



Existing Floor Plan

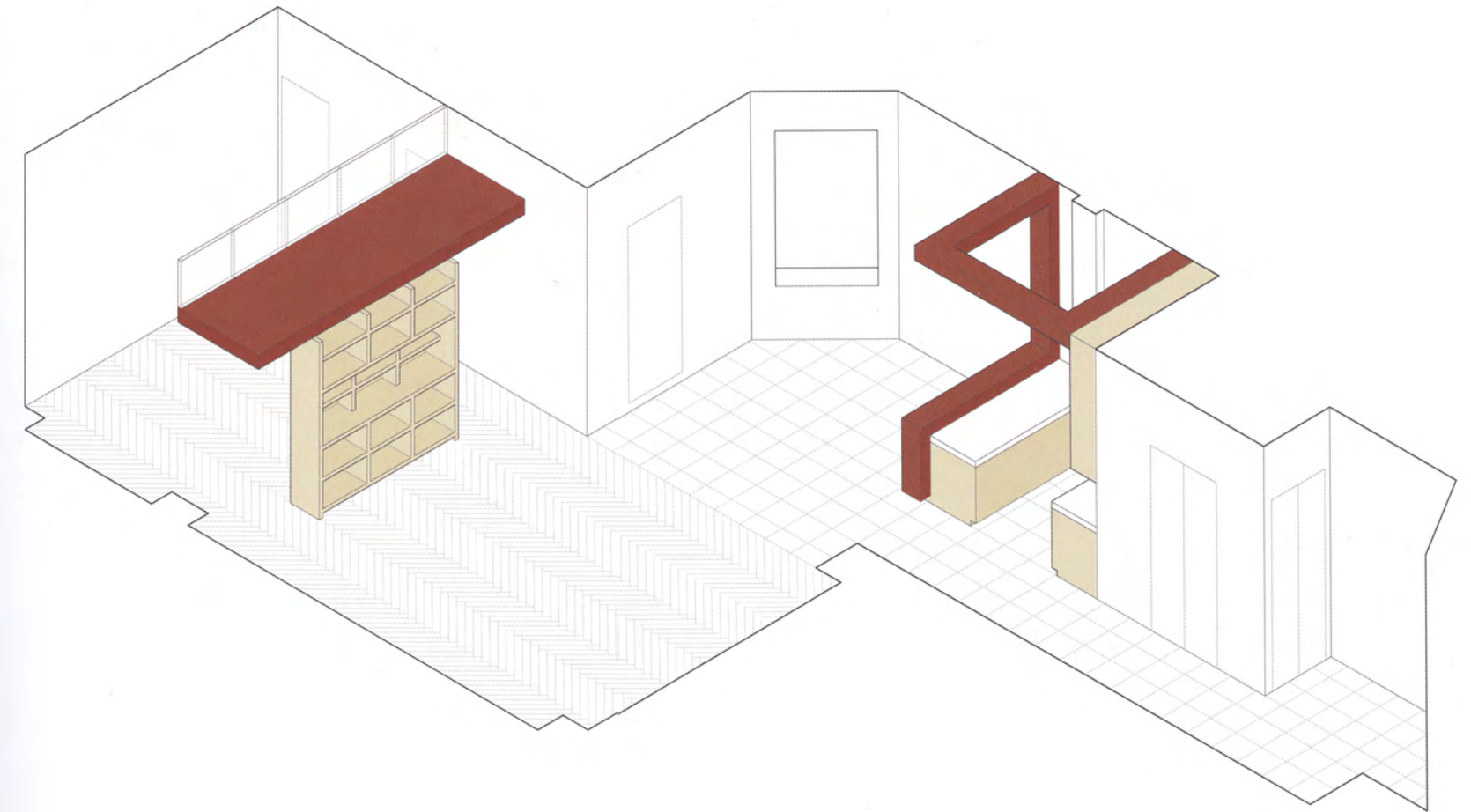


PREVIOUS PAGE: A view of the kitchen from the living room. The walnut band serves to define the perimeter of the kitchen.
 RIGHT: The axonometric and sections detail the use of the wooden plane between the living room and bedroom and the wooden band that defines the kitchen area.

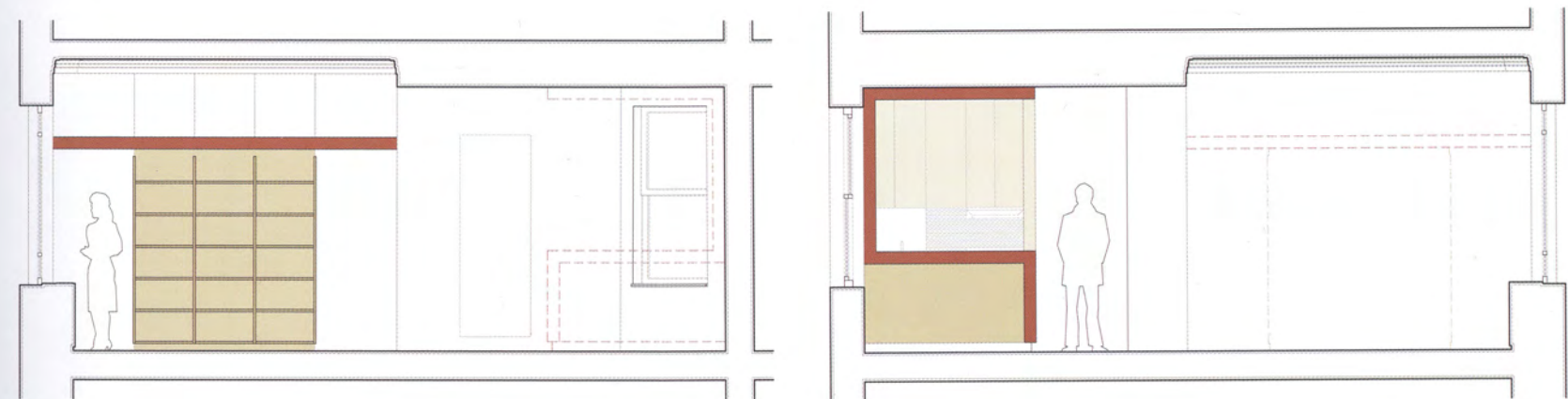
New Floor Plan



Axonometric



Sections





FAR LEFT: A view of the bookshelf separating the living room from the bedroom. Above the bookshelf is the floating wooden plane and above it is a clerestory window to bring additional light into the bedroom. By creating a space between the bookshelf and ceiling, both rooms are made to appear larger. Sliding glass doors are positioned on either side of the bookshelf.

LEFT: A door was added to the renovated bathroom to allow direct access to the living area for the convenience of guests.

